

Za instalaciju je potrebna stabilna internet konekcija, slobodnih 75 GB diska (nakon instalacije bice do 45 GB zauzeto) i strpljenje.

<https://www.xilinx.com/support/download.html>

Version

[2022.1](#)

[2021.2](#)

[2021.1](#)

[Vivado Archive](#)

[ISE Archive](#)

[CAE Vendor Libraries Archive](#)

Vivado ML Edition - 2021.1 Full Product Installation

Important Information

Vivado ML 2021.1 is now available for download:

- Improved performance with ML-based algorithms
- Block Design Containers now in production
- Introducing Vivado store
- Intelligent Design Runs for automatic timing closure
- DFX for Versal now available

Production Devices:

- Versal AI Core Series: - XCVC1902 and XCVC1802
- Versal Prime Series: - XCVM1802
- Virtex UltraScale+ HBM device: XCVU57P

We strongly recommend to use the web installers as it reduces download time and saves significant disk space.

Please see [Installer Information](#) for details.

Note:

- Download verification is only supported with Google Chrome and Microsoft Edge web browsers.
- Beginning this release we will be offering only 2 Editions for Vivado ML. Please go to product page for more details.
- Vivado ML 2021.1 and later versions require upgrading your license server tools to the Flex 11.17.2.0 versions.

 [Xilinx Unified Installer 2021.1: Windows Self Extracting Web Installer \(EXE - 226.04 MB\)](#)

MD5 SUM Value : 6bc01c7518717bea1c4aefcf90d6f1b

Download Verification 

Digests

Signature

Public Key

Download Includes

Vivado ML Edition

Download Type

Full Product Installation

Last Updated

Jun 22, 2021

Answers

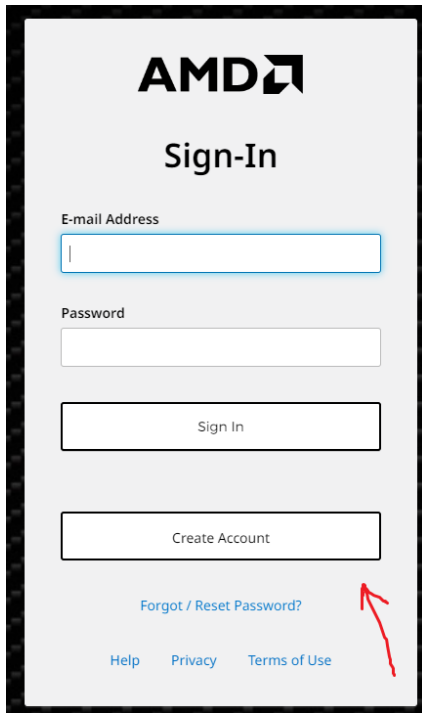
[2021.x - Vivado Known Issues](#)

Documentation

[Release Notes](#)
[OS Support Update](#)
[What's New in Vivado](#)

Support Forums

[Installation and Licensing](#)

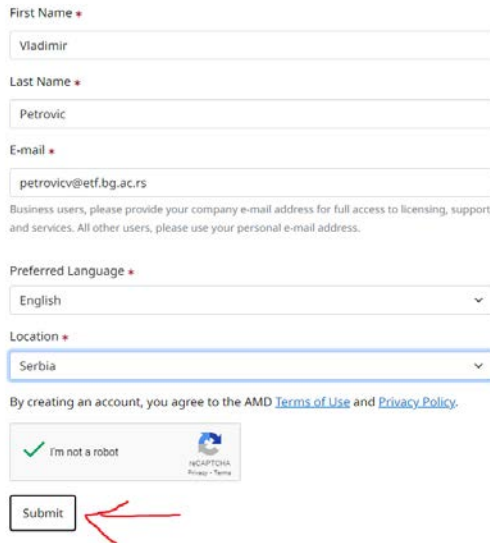


The image shows the AMD Sign-In page. At the top is the AMD logo. Below it is the heading "Sign-In". There are two input fields: "E-mail Address" and "Password". Below the password field is a "Sign In" button. Below that is a "Create Account" button. At the bottom, there is a link "Forgot / Reset Password?" with a red arrow pointing to it. Below that are links for "Help", "Privacy", and "Terms of Use".

AMD Account Creation

To create an account, complete the form below.

An account activation message with an **Access Token** will be sent via e-mail to the address you specify below.



The image shows the AMD Account Creation form. It has several fields: "First Name" with the value "Vladimir", "Last Name" with the value "Petrovic", "E-mail" with the value "petrovicv@etf.bg.ac.rs". Below the email field is a note: "Business users, please provide your company e-mail address for full access to licensing, support, and services. All other users, please use your personal e-mail address." There are two dropdown menus: "Preferred Language" set to "English" and "Location" set to "Serbia". Below these is a link: "By creating an account, you agree to the AMD [Terms of Use](#) and [Privacy Policy](#)." There is a CAPTCHA box with a green checkmark and the text "I'm not a robot" and the CAPTCHA logo. At the bottom is a "Submit" button with a red arrow pointing to it.

Unesite token koji vam je stigao na mejl.

Next Step - Activate Your Account

Please check your e-mail for your AMD account activation message.

To activate your account, enter the **Access Token** from the account activation e-mail message and create a password.

Access Token *

Password *

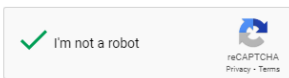
Password Strength: Weak, Please check the rules below.



- Must contain a minimum of 10 characters and a maximum of 72 characters
- Must contain at least 1 lowercase letter, 1 uppercase letter, 1 number and 1 special character (eg: !@\$%^&*+=)

Confirm Password *

Password match: Yes



Note: If you do not receive a confirmation e-mail within a few minutes please check your junk mail folder and add sender account.help@amd.com to your address book.

<https://www.xilinx.com/support/download.html>

U.S. Government Export Approval

- U.S. export regulations require that your First Name, Last Name, Company Name and Shipping Address be verified before Xilinx can fulfill your download request. **Please provide accurate and complete information.**
- Addresses with Post Office Boxes and names/addresses with Non-Roman Characters with accents such as grave, tilde or colon **are not supported** by US export compliance systems.

First Name*

Vladimir

Last Name*

Petrovic

Business E-mail*

petrovicv@etf.bg.ac.rs

Company Name*

University of Belgrade – School of Electrical Engineering

Please enter the name of your business or institution.

Address 1*

Bulevar kralja Aleksandra 73

Please enter your Company Address.

Address 2

Location*

Serbia

State/Province

Serbia

City*

Belgrade

Postal Code

11120

Phone

Job Function*

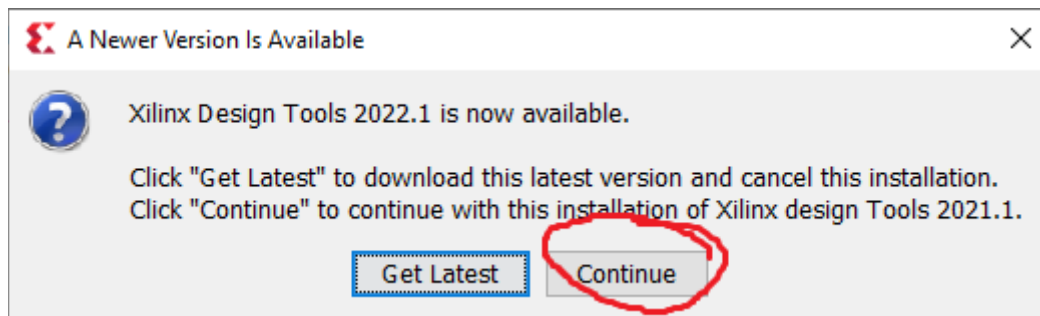
Professor/Instructor

You can read about how we handle your personal data, your personal data rights, and how you can contact us in our [privacy policy](#).

Download



Pokrenuti Xilinx_Unified_2021.1_0610_2318_Win64.exe.




Next

Xilinx Unified 2021.1 Installer - Select Install Type

Select Install Type

Please select install type and provide your Xilinx.com E-mail Address and password for authentication.



User Authentication

Please provide your Xilinx user account credentials to download the required files.
If you don't have an account, [please create one](#). If you forgot your password, you can [reset it here](#).

E-mail Address

Password

Download and Install Now

Select your desired device and tool installation options and the installer will download and install just what is required.

Download Image (Install Separately)

The installer will download an image containing all devices and tool options for later installation. Use this option if you wish to install a full image on a network drive or allow different users maximum flexibility when installing.

Copyright © 1986-2022 Xilinx, Inc. All rights reserved.

< Back Next > Cancel

Select Product to Install



Select a product to continue installation. You will be able to customize the content in the next page.

Vitis

Installs Vitis Core Development Kit for embedded software and application acceleration development on Xilinx platforms. Vitis installation includes Vivado Design Suite. Users can also install Vitis Model Composer to design for AI Engines and Programmable Logic in MATLAB and Simulink.

Vivado

Includes the full complement of Vivado Design Suite tools for design, including C-based design with Vitis High-Level Synthesis, implementation, verification and device programming. Complete device support, cable driver, and Document Navigator included. Users can also install Vitis Model Composer to design for AI Engines and Programmable Logic in MATLAB and Simulink.

On-Premises Install for Cloud Deployments (Linux only)

Install on-premises version of tools for cloud deployments.

BootGen

Installs Bootgen for creating bootable images targeting Xilinx SoCs and FPGAs.

Lab Edition

Installs only the Xilinx Vivado Lab Edition. This standalone product includes the Vivado Device Programmer and Vivado Logic Analyzer tools.

Hardware Server

Installs hardware server and JTAG cable drivers for remote debugging.

PetaLinux

PetaLinux SDK is a Xilinx development tool that contains everything necessary to build, develop, test, and deploy embedded Linux systems.

Select Edition to Install



Select an edition to continue installation. You will be able to customize the content in the next page.

Vivado ML Standard

Vivado ML Standard Edition is the no-cost, device limited version of the Vivado ML Enterprise edition. Users can add Vitis Model Composer which is a Xilinx toolbox for MATLAB and Simulink to design for AI Engines and Programmable Logic. If you have been using Xilinx System Generator for DSP, you can continue development using Vitis Model Composer.

Vivado ML Enterprise

Vivado ML Enterprise Edition includes the full complement of Vivado Design Suite tools for design, including C-based design with Vitis HLS, implementation, verification, and device programming. Complete device support, cable drivers, and documentation Navigator are included. Users can add Vitis Model Composer which is a Xilinx toolbox for MATLAB and Simulink to design for AI Engines and Programmable Logic. If you have been using Xilinx System Generator for DSP, you can continue development using Vitis Model Composer.

Vivado ML Standard



Customize your installation by (de)selecting items in the tree below. Moving cursor over selections below provide additional information.

Vivado ML Standard Edition is the no-cost, device limited version of the Vivado ML Enterprise edition. Users can add Vitis Model Composer which is a Xilinx toolbox for MATLAB and Simulink to design for AI Engines and Programmable Logic. If you have been using Xilinx System Generator for DSP, you can continue development using Vitis Model Composer.

- Design Tools
 - Vivado Design Suite
 - Vivado
 - Vitis HLS
 - Vitis Model Composer(Xilinx Toolbox for MATLAB and Simulink. Includes the functionality of System Generator for DSP)
 - DocNav
 - Devices
 - Production Devices
 - SoCs
 - Zynq-7000 ([limited support](#))
 - Zynq UltraScale+ MPSoC ([limited support](#))
 - Zynq UltraScale+ RFSoc
 - 7 Series ([limited support](#))
 - Artix-7
 - Kintex-7
 - Spartan-7
 - Virtex-7
 - UltraScale ([limited support](#))
 - UltraScale+ ([limited support](#))
 - Versal ACAP
 - Engineering Sample Devices
- Installation Options
 - Install Cable Drivers (You MUST disconnect all Xilinx Platform Cable USB II cables before proceeding)
 - Enable WebTalk for Vivado to send usage statistics to Xilinx (Always enabled for Vivado ML Standard license)

Samo ovo nam je potrebno ←

Download Size: 21.96 GB
Disk Space Required: 72.1 GB

[Reset to Defaults](#)

Accept License Agreements



Please read the following terms and conditions and indicate that you agree by checking the I Agree checkboxes.

Xilinx Inc. End User License Agreement

By checking "I Agree" below, or OTHERWISE ACCESSING, DOWNLOADING, INSTALLING or USING THE SOFTWARE, I AGREE on behalf of licensee to be bound by the agreement, which can be viewed by [clicking here](#).

I Agree

WebTalk Terms And Conditions

By checking "I Agree" below, I also confirm that I have read [Section 13 of the terms and conditions](#) above concerning WebTalk and have been afforded the opportunity to read the WebTalk FAQ posted at <https://www.xilinx.com/products/design-tools/webtalk.html>. I understand that I am able to disable WebTalk later if certain criteria described in Section 13(c) apply. If they don't apply, I can disable WebTalk by uninstalling the Software or using the Software on a machine not connected to the internet. If I fail to satisfy the applicable criteria or if I fail to take the applicable steps to prevent such transmission of information, I agree to allow Xilinx to collect the information described in Section 13(a) for the purposes described in Section 13(b).

I Agree

Third Party Software End User License Agreement

By checking "I Agree" below, or OTHERWISE ACCESSING, DOWNLOADING, INSTALLING or USING THE SOFTWARE, I AGREE on behalf of licensee to be bound by the agreement, which can be viewed by [clicking here](#).

I Agree

Zadržati podrazumevanu putanju.

Select Destination Directory



Choose installation options such as location and shortcuts.

Installation Options

Select the installation directory

C:\Xilinx ...

Installation location(s)

C:\Xilinx\Vivado\2021.1

C:\Xilinx\Vitis_HLS\2021.1

C:\Xilinx\Model_Composer\2021.1

C:\Xilinx\DocNav

Download location

C:\Xilinx\Downloads\Vivado_2021.1

Disk Space Required

Download Size:	21.96 GB
Disk Space Required:	72.1 GB
Final Disk Usage:	42.93 GB
Disk Space Available:	87.33 GB

Select shortcut and file association options

Create program group entries

Xilinx Design Tools

Create desktop shortcuts

Create file associations

Apply shortcut & file association selections to

Current user

All users

UNIFIED Xilinx Installer

Installation Summary

Edition: Vivado ML Standard

Devices

- Production Devices (SoCs)

Design Tools

- Vivado Design Suite (Vivado, Vitis HLS)
- Vitis Model Composer (Xilinx Toolbox for MATLAB and Simulink. Includes the functionality of System Generator for DS)
- DocNav

Installation Options

- Enable WebTalk for Vivado to send usage statistics to Xilinx (Always enabled for Vivado ML Standard license)
- Install Cable Drivers (You MUST disconnect all Xilinx Platform Cable USB II cables before proceeding)

Installation location

- C:\Xilinx\Vivado\2021.1
- C:\Xilinx\Vitis_HLS\2021.1
- C:\Xilinx\Model_Composer\2021.1
- C:\Xilinx\DocNav

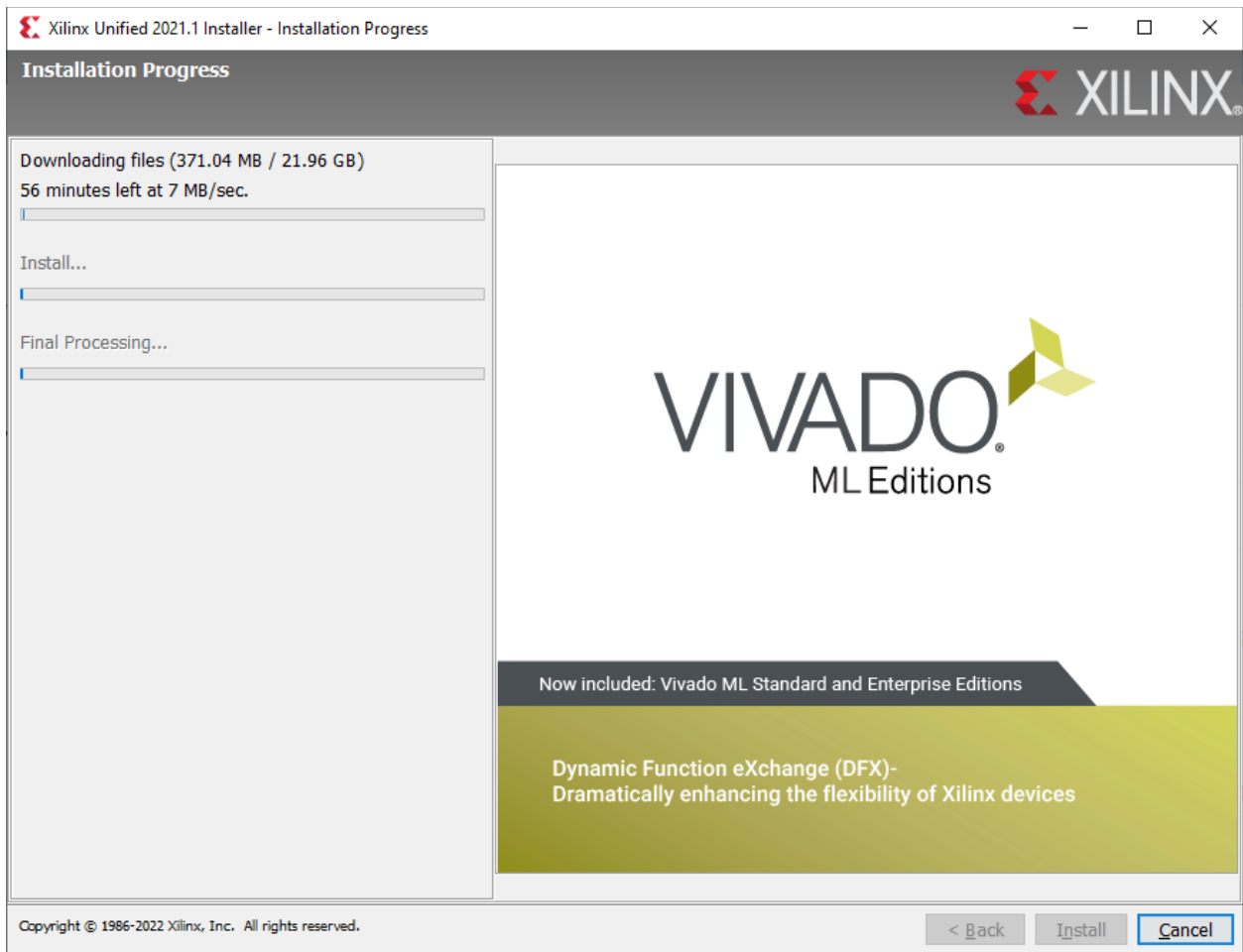
Download location

- C:\Xilinx\Downloads\Vivado_2021.1

Disk Space Required

- Download Size: 21.96 GB
- Disk Space Required: 72.1 GB
- Final Disk Usage: 42.93 GB





I cekas...